

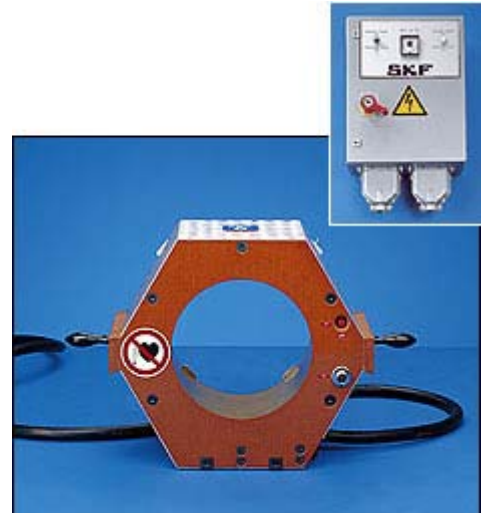
Application

The non-adjustable induction heaters EAZ are used to dismount inner rings of four-row cylindrical roller bearings with an interference fit up to p6. These bearings are commonly used in light section steel mills and wire rod mills. Because of rapid wear, heavy loads and severe contamination, the rolls must frequently be replaced. This inevitably involves dismounting of the inner rings and remounting them on new rolls.

Description

The non-adjustable electrical induction heaters are designed for each particular bearing and application.

The tool which is placed over the inner ring to be heated consists of a cylindrical coil made of copper wire, which is permanently mounted in a plastic housing serving as a mechanical extractor. The coil is energized by an alternating current and the resultant alternating magnetic field induces eddy currents which are converted into heat within the ring. As magnetic field with a frequency of 50 to 60 Hz penetrates steel to a depth of just a few millimetres the roll neck is only slightly heated. The ring expands and can be withdrawn after a pre-determined heating time by means of withdrawing bars engaged behind the ring. Each heater comes with a detailed instruction manual.



Voltage classification

Each heater is available in three different voltage executions as per the following list

LV	Low	190 to 230 V
MV	Medium	400 to 480 V
HV	High	500 to 575 V

Please add corresponding class as a suffix to the designation when ordering (e.g. EAZ 166 HV).

Control cabinets

The EAZ is connected two-phase via a control cabinet to any three-phase mains. The control cabinet incorporates various safety features and a timing relay which is accessible from the outside and serves for setting the predetermined heating time.

Designations

SS 250A	230V, 50Hz, 250A
SS 250B	400V, 50Hz, 250A
SS 250C	460V, 60Hz, 250A
SS 350A	230V, 50Hz, 350A
SS 350B	400V, 50Hz, 350A
SS 350C	460V, 60Hz, 350A
SSD 350A	230V, 50Hz, 350A (2x)
SSD 350B	400V, 50Hz, 350A (2x)
SSD 350C	460V, 60Hz, 350A (2x)

NB! A special control cabinet suitable for handling two heaters at the same time is available under the designation of SSD 350.

When ordering the control cabinets, which has to be done separately, please indicate which voltage/frequency version is required with the addition of one of the following suffixes:

- A - 230V, 50Hz
- B - 400V, 50Hz
- C - 460V, 60Hz

Special voltage/frequency versions are available on request.

The suitable control cabinets are indicated in the below technical data.

Demagnetisation

Having been heated by the EAZ, the rings are magnetised. In order to prevent damage during further use, for example due to steel particles sticking to them, they must be demagnetised. For small-sized inner rings SKF demagnetiser 729121 can be used. For larger rings SKF induction heaters type TIH are recommended.

Specials

Special versions of the non-adjustable EAZ heaters can be provided for any ring with a bore diameter of 25 to 1600 mm.

For the preparation of a quotation, please provide bearing designation or specific component dimensions, such as:

- outer diameter of component
- bore diameter tolerances
- width of component
- shaft diameters with tolerances

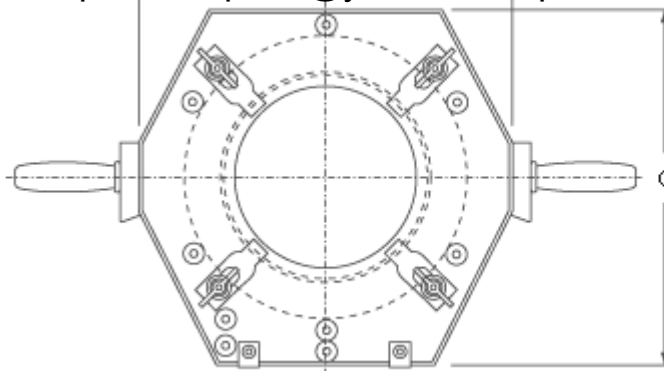
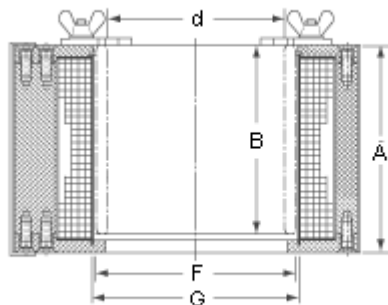
Please also specify type of power supply in terms of voltage and frequency.

Spare parts

Available on special request.

Technical data

Heater designation	Voltage class	Bearing designation	Coil Current consumption	Connecting cable	Control cabinet	Dimensions ring	Dimensions heater
--------------------	---------------	---------------------	--------------------------	------------------	-----------------	-----------------	-------------------



						d	B	F	G	C	D	A
						mm						
EAZ 166	LV	314625	170	A07 RN - F 3 x 25	SS 250	145 p6	155	166	169	350	370	176
	MV		100	A07 RN - F 3 x 16								
	HV		75	A07 RN - F 3 x 16								
EAZ 169	LV	313924 A	170	A07 RN - F 3 x 25	SS 250	145 p6	156	169	172	355	378	176
	MV		100	A07 RN - F 3 x 16								
	HV		75	A07 RN - F 3 x 16								
EAZ 174	LV	313891 A	165	A07 RN - F 3 x 25	SS 250	150 p6	156	174	177	360	388	176
	MV		95	A07 RN - F 3 x 16								
	HV		75	A07 RN - F 3 x 16								
EAZ 179	LV	315189 A	180	A07 RN - F 3 x 35	SS 250	160 p6	168	179	182	355	378	184
	MV		105	A07 RN - F 3 x 16								
	HV		80	A07 RN - F 3 x 16								
EAZ 180	LV	314190	150	A07 RN - F 3 x 25	SS 250	160 p6	130	180	183	365	390	151
	MV		85	A07 RN - F 3 x 16								
	HV		65	A07 RN - F 3 x 16								
EAZ 181	LV	315642/ VJ202	180	A07 RN - F 3 x 35	SS 250	165,1 p6	165	181	184	355	378	190
	MV		105	A07 RN - F 3 x 16								
	HV		80	A07 RN - F 3 x 16								
EAZ 190	LV	BC4B 635122	140	A07 RN - F 3 x 25	SS 250	170 p6	130	190	193	375	402	151
	MV		80	A07 RN - F 3 x 16								
	HV		60	A07 RN - F 3 x 16								
EAZ 202	LV	313812	165	A07 RN - F 3 x 25	SS 250	180 p6	168	202	205	375	402	190
	MV		95	A07 RN - F 3 x 16								
	HV		70	A07 RN - F 3 x 16								
EAZ 212	LV	314199 B	200	A07 RN - F 3 x 35	SS 250	190 p6	200	212	215	385	412	217
	MV		115	A07 RN - F 3 x 25								
	HV		90	A07 RN - F 3 x 16								
EAZ 222-1	LV	314553	190	A07 RN - F 3 x 35	SS 250	200 p6	170	222	225	385	412	190
	MV		110	A07 RN - F 3 x 16								
	HV		85	A07 RN - F 3 x 16								
EAZ 222-2	LV	313893	215	A07 RN - F 3 x 25	SS 250	200 p6	200	222	225	395	422	217
	MV		125	A07 RN - F 3 x 16								
	HV		95	A07 RN - F 3 x 16								
EAZ 226	LV	313811	210	A07 RN - F 3 x 35	SS 250	200 p6	192	226	229	400	425	213
	MV		120	A07 RN - F 3 x 25								
	HV		95	A07 RN - F 3 x 16								
EAZ 244	LV	313894 B	300	A07 RN - F 3 x 50	SS 350	220 r6	225	244	247	410	435	247
	MV		175	A07 RN - F 3 x 35	SS 250							
	HV		130	A07 RN - F 3 x 25								
EAZ 246	LV	313839	260	A07 RN - F 3 x 50	SS 350	220 r6	192	246	249	410	435	214
	MV		150	A07 RN - F 3 x 25	SS 250							
	HV		115	A07 RN - F 3 x 25								
EAZ 260	LV	313824	275	A07 RN - F 3 x 50	SS 350	230 r6	206	260	263	425	450	227
	MV		160	A07 RN - F 3 x 25	SS 250							
	HV		120	A07 RN - F 3 x 35								
EAZ 265	LV	635194	240	A07 RN - F 3 x 35	SS 250	240 r6	180	265	268	430	457	201
	MV		140	A07 RN - F 3 x 25								
	HV		105	A07 RN - F 3 x 16								
EAZ 270	LV	313921	265	A07 RN - F 3 x 50	SS 350	240 r6	220	270	273	435	460	233
	MV		155	A07 RN - F 3 x 25	SS 250							
	HV		115	A07 RN - F 3 x 25								
EAZ 292	LV	313823	295	A07 RN - F 3 x 50	SS 350	260 r6	220	292	295	445	470	240
	MV		170	A07 RN - F 3 x 25	SS 250							
	HV		130	A07 RN - F 3 x 25								
EAZ 308	LV	314719 C	335	A07 RN - F 3 x 50	SS 350	280 r6	275	308	311	460	490	296
	MV		195	A07 RN - F 3 x 35	SS 250							
	HV		145	A07 RN - F 3 x 25								
EAZ 312	LV	313822	285	A07 RN - F 3 x 50	SS 350	280 r6	220	312	315	465	490	238
	MV		165	A07 RN - F 3 x 25	SS 250							
	HV		125	A07 RN - F 3 x 16								
	LV		265	A07 RN - F 3 x 70	SS 350							

EAZ 378	LV MV HV	314485 A	375 240 205	A07 RN - F 3 x 70 A07 RN - F 3 x 25	SS 350 SS 250	340 r6	350	378	381	525	555	368	322
---------	----------------	----------	-------------------	--	------------------	--------	-----	-----	-----	-----	-----	-----	-----



© SKF Maintenance Products Date of issue: 2002-05-01